



**3RD INTERNATIONAL BOLOGNESE & MALTESE SYMPOSIUM
FCI JUDGES MEETING
HELSINKI, FINLAND 7.8.2014**

**THE FINNISH BOLOGNESE CLUB & THE FINNISH MALTESE CLUB
IN COOPERATION WITH
THE FINNISH TOYDOG ASSOCIATION & IL CLUB DEL BOLOGNESE E MALTESE**

WITH SUPPORT BY



THE FINNISH SHOW JUDGES' SOCIETY

B

BOLOGNESE

INTERPRETATION OF THE STANDARD

FRANCESCO COCHETTI

FCI ALL BREEDS JUDGE / ITALY

B

IMPORTANT PROPORTIONS

**Small size, stocky and compact,
covered with a pure white coat, long and fluffy.**

Not long body and/or short on legs.



B

IMPORTANT PROPORTIONS



B

IMPORTANT PROPORTIONS

Many Bolognese nowadays are too long in body and/or too short in legs.

The proportions of the body is something very important in this breed.

B

IMPORTANT PROPORTIONS



B

BEHAVIOR / TEMPERAMENT

Serious, generally not active.

Enterprising and sweet.

Shy Bolognese must be strictly penalized.

B

HEAD

Of medium length reaching 1/3 of the height at the withers.

Its width, measured at the level of the zygomatic arches is the same as its length.

The head is of course one of the main part of the breed type, but people should never forget that there is no type without a sound construction and a sound movement.

B

HEAD



B

HEAD

The proportions between muzzle-skull are very important, because together with the position of the eyes and ears set give the typical expression of the breed, and this is also one of the difference between Bolognese and Bichon Frisé.

B

HEAD



B

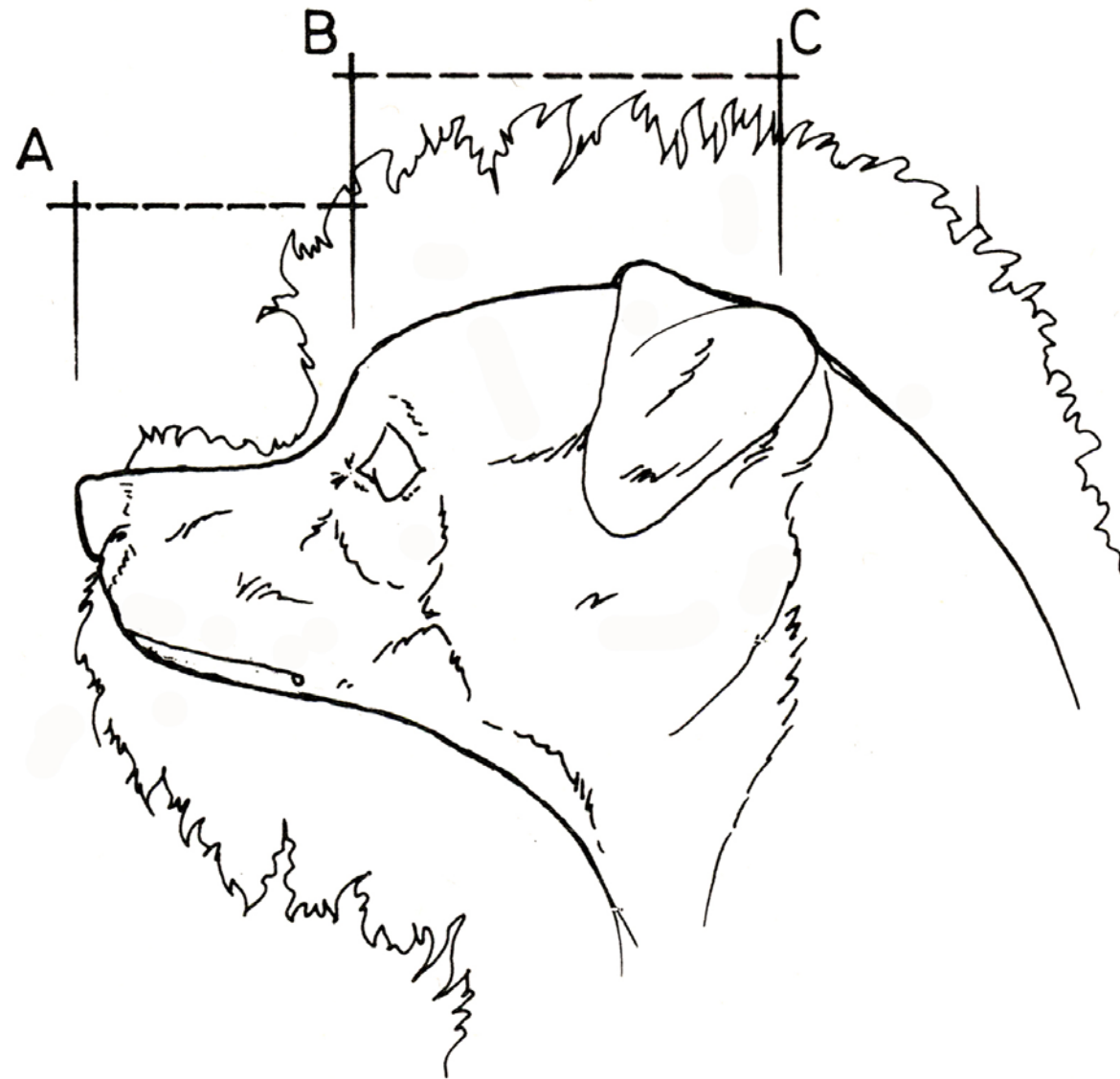
HEAD



B

HEAD

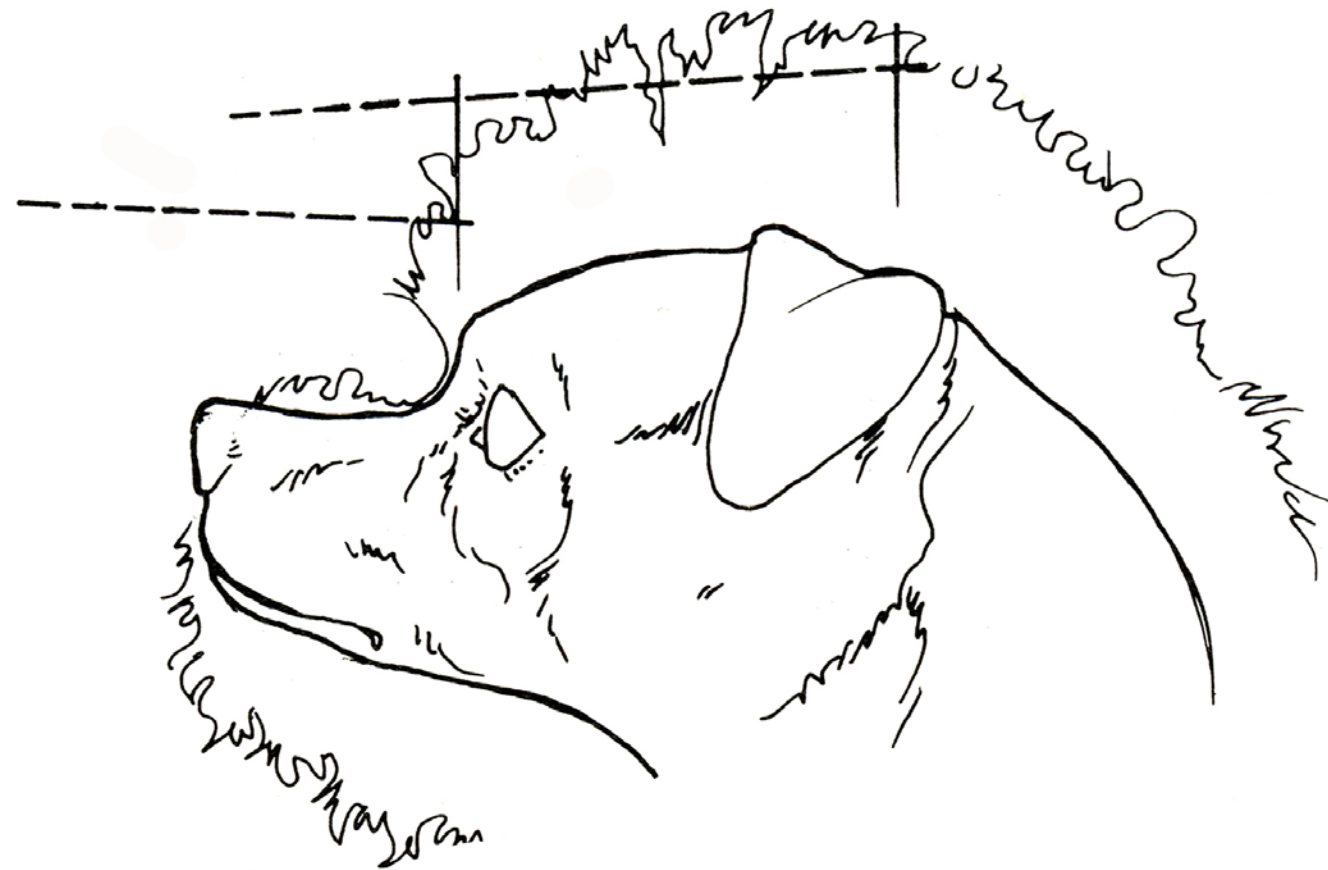
CORRECT



B

HEAD

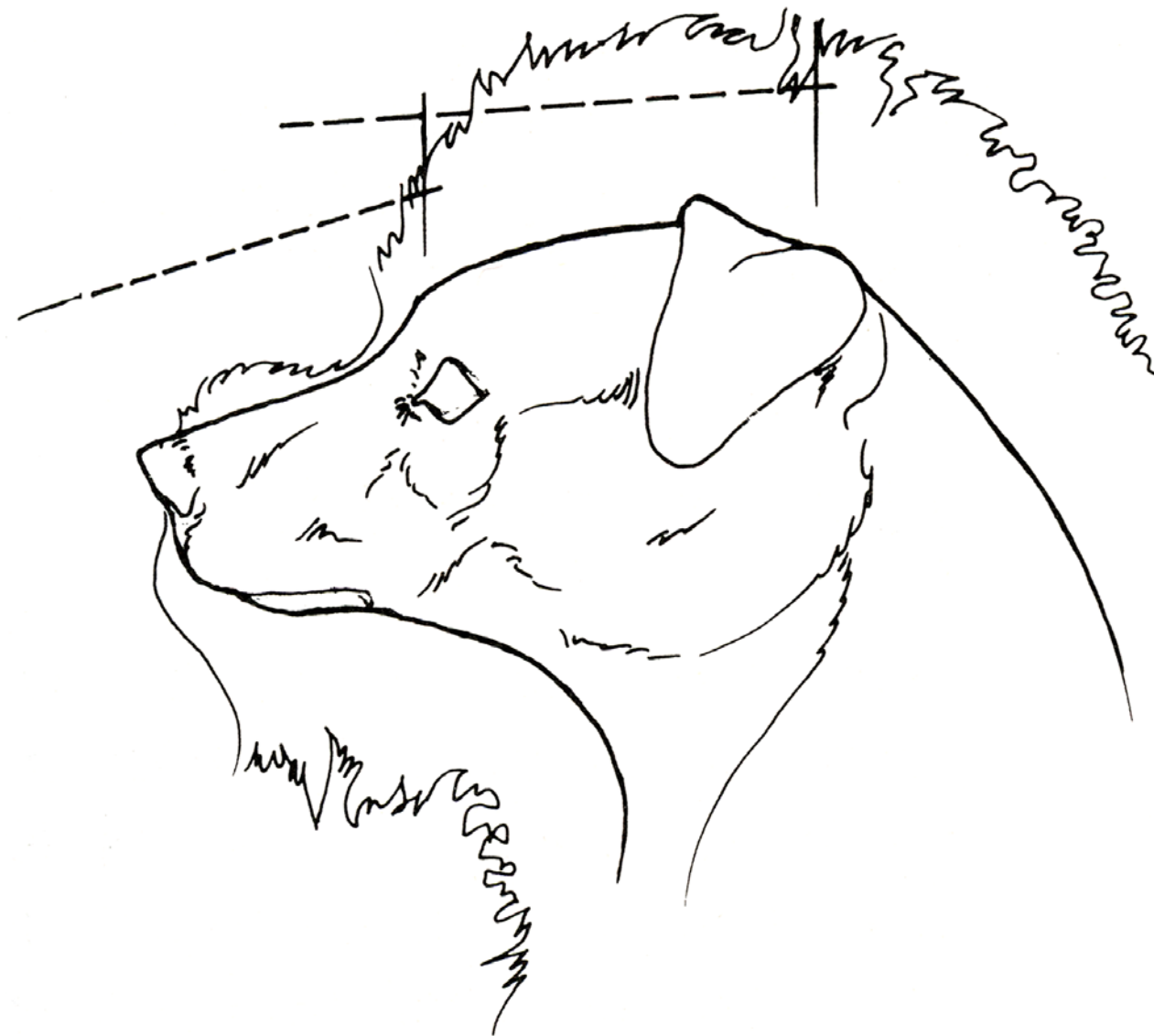
NOT CORRECT



B

HEAD

NOT CORRECT



B

THE SHAPE OF THE SKULL

INCORRECT



© FREDRIKA RÖNQUIST / ANNA RATIA



**ROUNDED SKULL
TOO ACCENTUATED STOP
TOO SHORT MUZZLE
EYES IN FRONTAL POSITION**

B

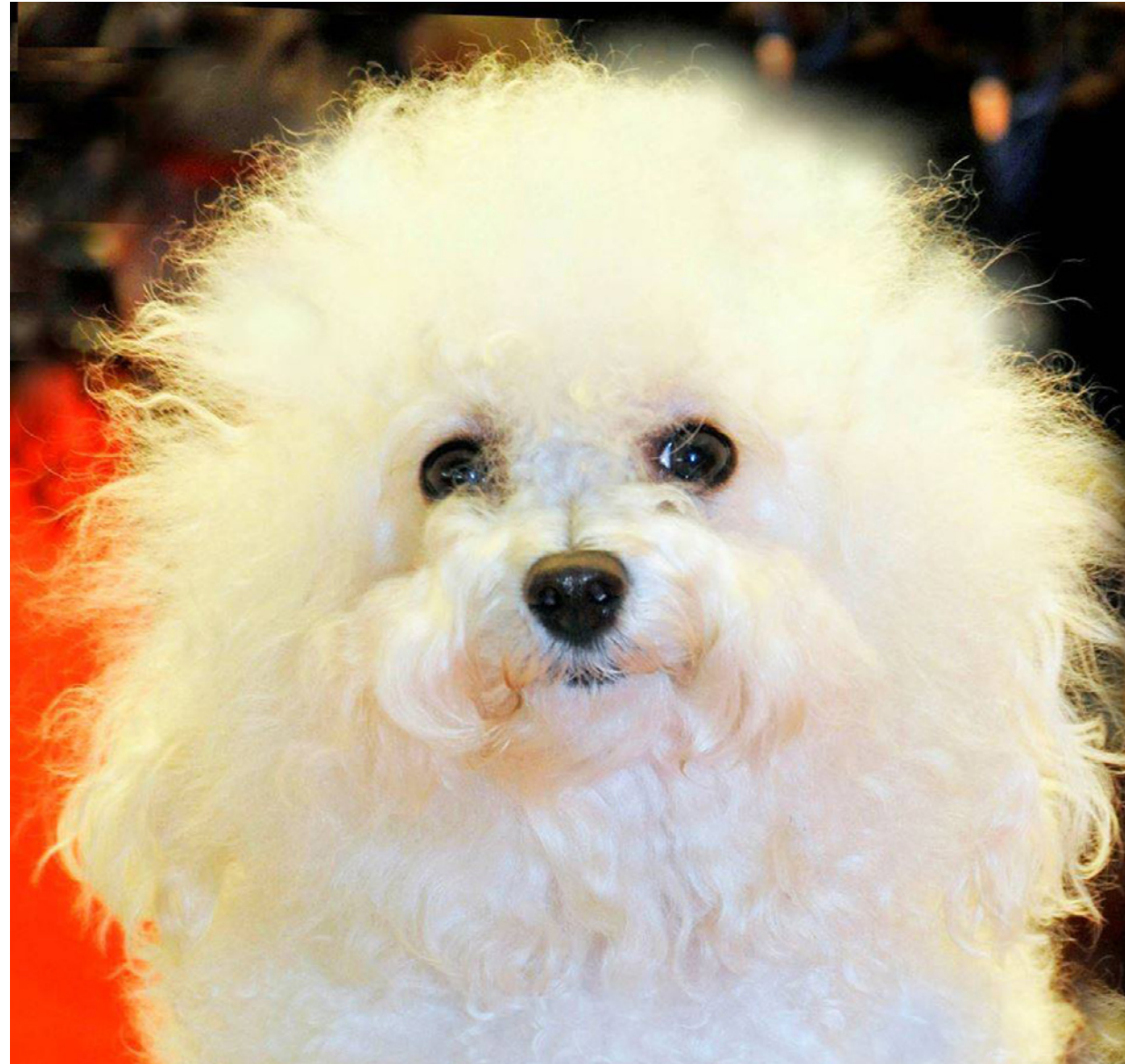
EYES

Very important: correct placement and right colour.

The correct placement and the right colour of the eyes is very important for the Bolognese expression. Nowadays you can easily see Bolognese with too small eyes and/or with black eyes which give to the breed an arrogant expression. You can see Bolognese who looks more like a Bichon Frisé when it has eyes closer together and more forward positioned.

B

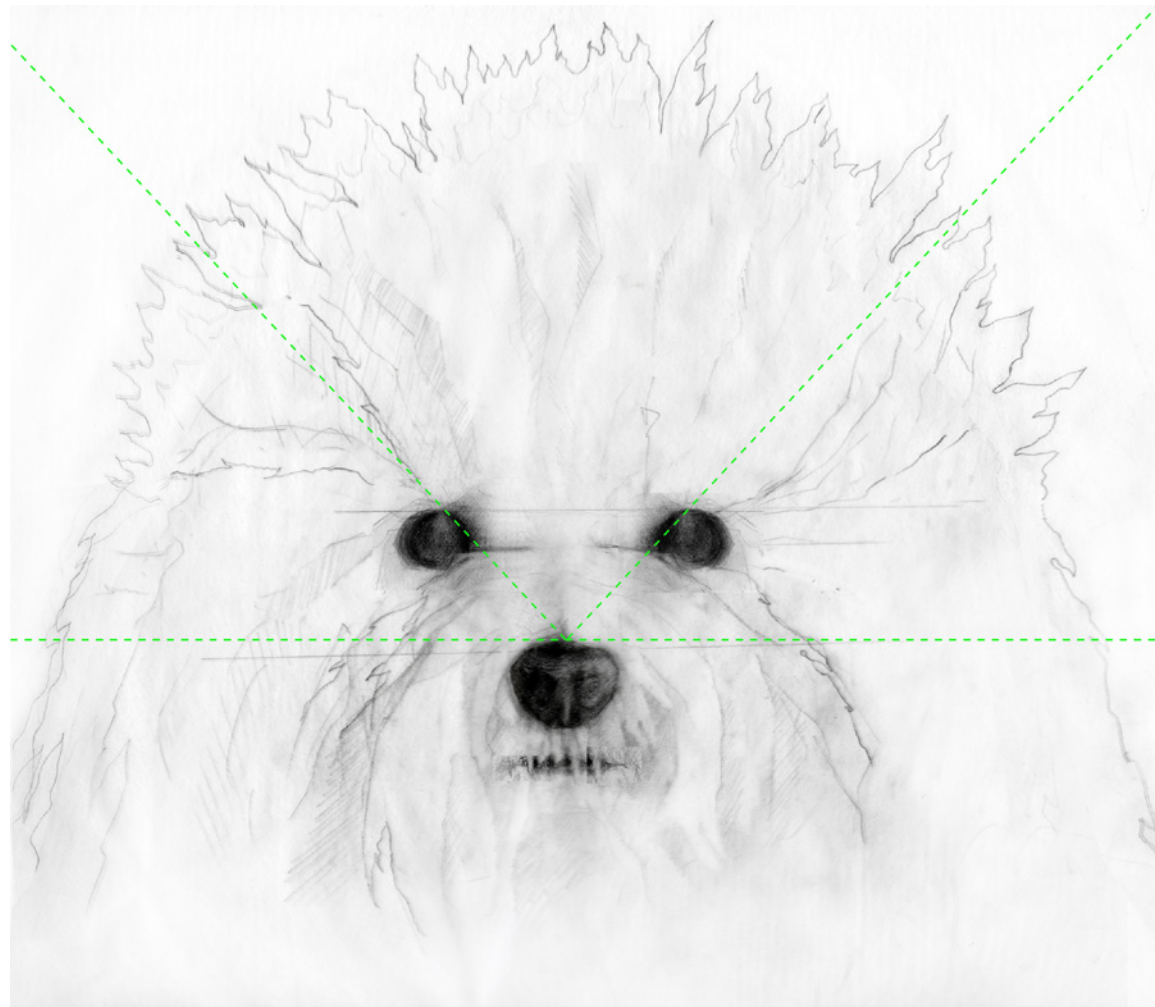
EYES



B

THE POSITION OF THE EYES

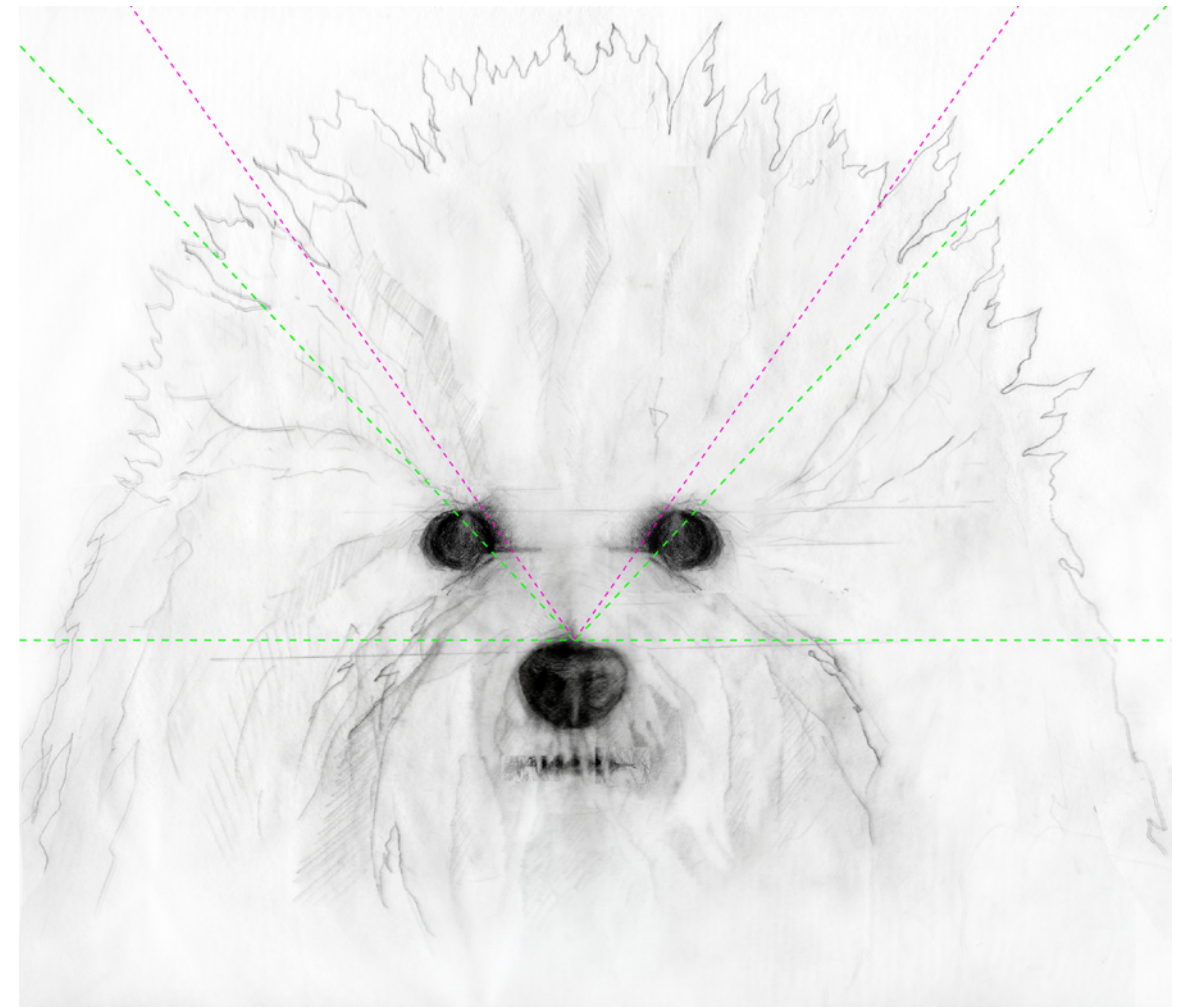
CORRECT



© FREDRIKA RÖNQUIST / ANNA RATIA

EYES IN SUBFRONTAL POSITION

INCORRECT



EYES IN FRONTAL POSITION

B

EARS

EARS : High set, they are long and hanging, but rather rigid at their base, so that the upper part of the external ear is detached from the skull, giving thus the impression of the head being larger than it really is.

The high set of the ears gives to the Bolognese the typical expression and makes the difference for example with the Bichon Frisé who has drooping ears.

B

FACIAL REGION

On the same line as the topline of the muzzle; seen in profile, its front side is on the vertical.

Is large and must be black.

Often we see nowadays Bolognese with narrow nose and this could give problems for breathing properly. It happens especially when they have too short muzzles.

B

JAWS / TEETH

Normally developed.

Articulation of incisors as scissor bite; pincer bite tolerated.

B

JAWS / TEETH

Missing:

2 PM1

1 or 2 PM2

M3

Should be not considered a severe fault.

B

JAWS / TEETH



B

NECK

Without dewlap; its length is equal to the length of the head.

Bolognese is a toy breed and elegance is an important part of the toy breeds.

For this reason a good length of neck must be appreciated.

B

BODY

Bolognese is a square dog.

Straight topline.

Well developed chest.

**To keep the correct proportions of the body seems not easy for the breed
and breeders should put more effort on this.**

Bolognese is a square dog.

B

BODY



B

BODY



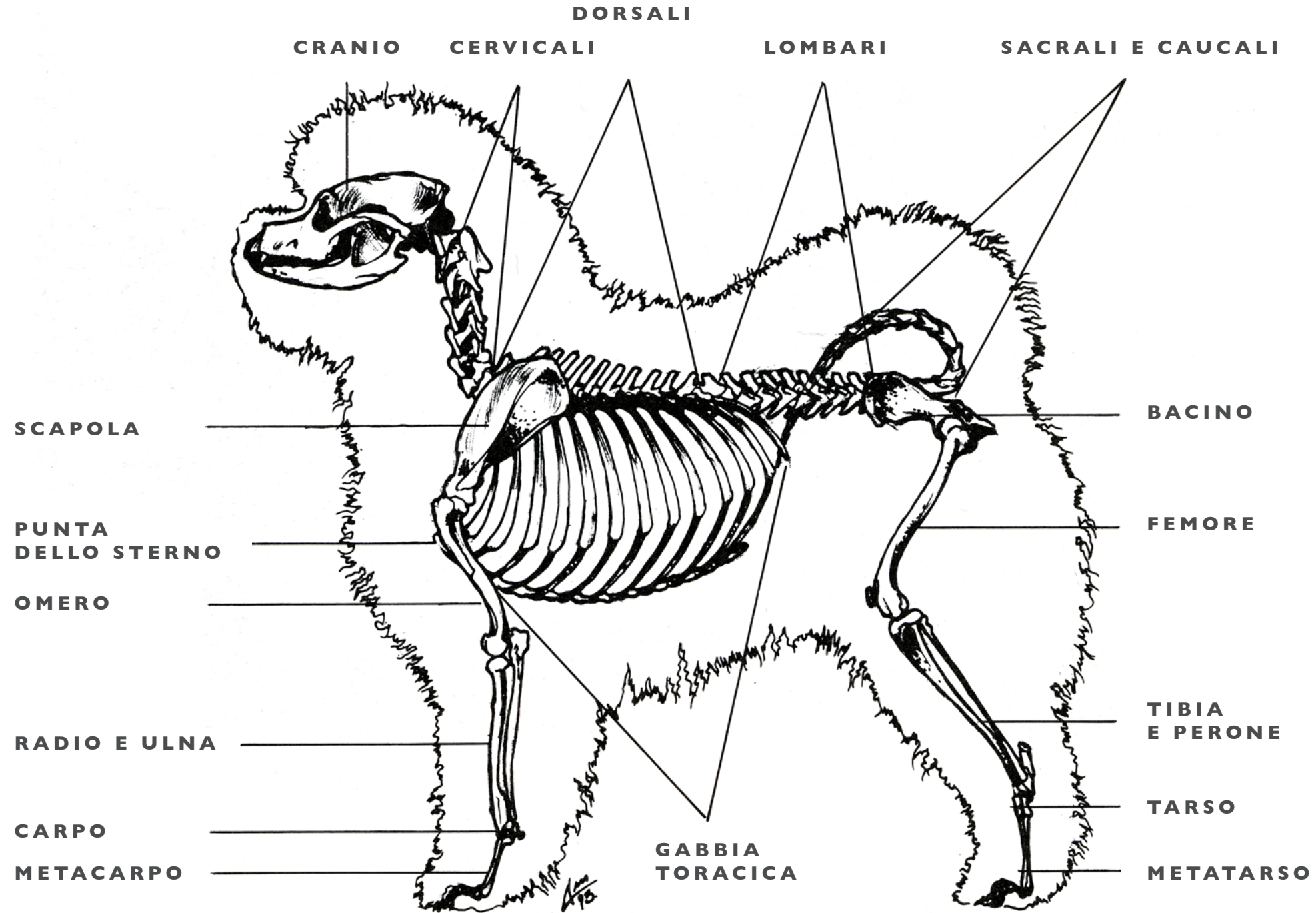
B

BODY



B

BODY



B

BODY

Chest must be well developed.

Bolognese who have not chest and not body must be penalized.



B

LIMBS

Proportion between arm and upper arm is approximately the same.

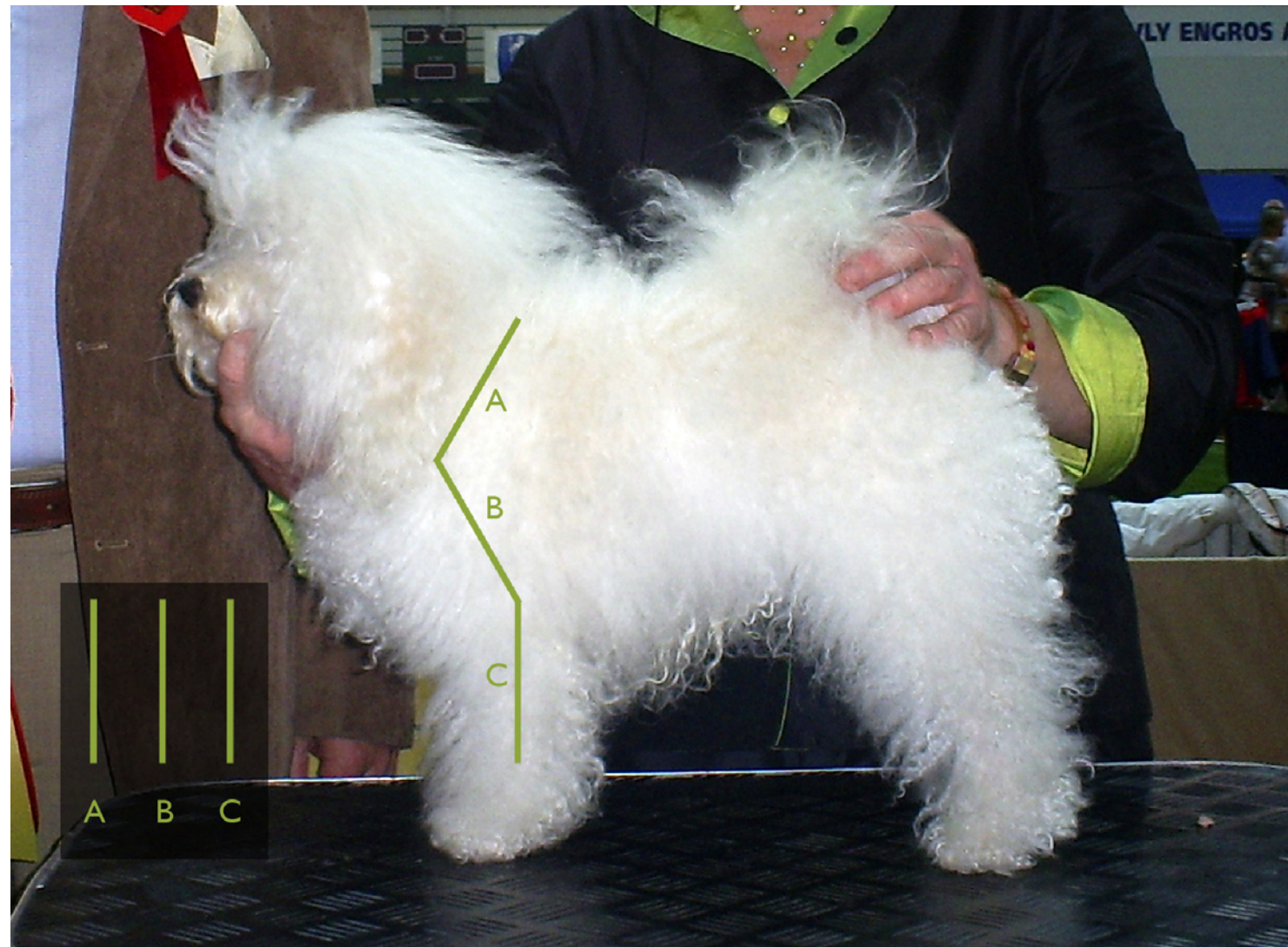
Bolognese is not short in legs.

This is something where to focus more the attention as today we still see many Bolognese short in legs.

B

LENGTH OF LEGS

The green lines show the correct proportions – the length of the shoulderblade is equal to that of the upper arm and that of the forearm.



B

LENGTH OF LEGS

CORRECT



B

LENGTH OF LEGS

INCORRECT - TOO LOW ON LEGS



B

LENGTH OF LEGS

INCORRECT - TOO HIGH ON LEGS



B

CORRECT PROPORTIONS



B

GAIT / MOVEMENT

Free, energetic, with a noble and distinguished head carriage.

A good movement means a good construction and this is also an important part of the breed.

Running in the ring is totally wrong.

B

GAIT / MOVEMENT



B

GAIT / MOVEMENT



B

COAT

Hair long all over the body.

Shorter on the muzzle.

Rather fluffy, thus not lying flat, but in flocks; never forms fringes.

The right colour of the coat is “milky white” or “ivory” and Bolognese coat is not so thick as the Bichon Frisé coat.

There are two kinds of hairs, one that is wooly and soft and one that is thicker, harder and glossy. These hairs do not form different layers but are distributed all over the body except the ears and tail where the coat is more silky. As the wooly hairs break more easily the top part of the coat is dominated by the thicker hairs.

B

COAT

The grooming has to be as natural as possible. Over groomed dogs must be penalized.



B

COAT



B

COAT



Jan-13

B

COAT

Yellow markings on the coat should be penalized.

NB! Puppies and young dogs



B

SIZE AND WEIGHT

Height at the withers:

Males: 27 to 30 cm

Females: 25 to 28 cm

Weight: from 2,5 to 4 kg

Weight: from 3 to 5 kg.

Smaller size is preferred!

B

DISQUALIFYING FAULTS

Aggressive or overly shy.

Depigmentation of the nose.

Nose of any other colour than black.

Undershot mouth. (Overshot mouth.)

Bilateral depigmentation of the eyelids.

Wall-eyed.

Tail less.

Shortened tail whether natural or artificial.

Any other colour than white.

Patches and flecks.

B

DISQUALIFYING FAULTS

Convergence or divergence accentuated.

Roman nose.

Flat coat.

**Height at the withers for the males less than 25 cm and over 33 cm and
for the females less than 22 cm and more than 32 cm.**

B

THANK YOU!

